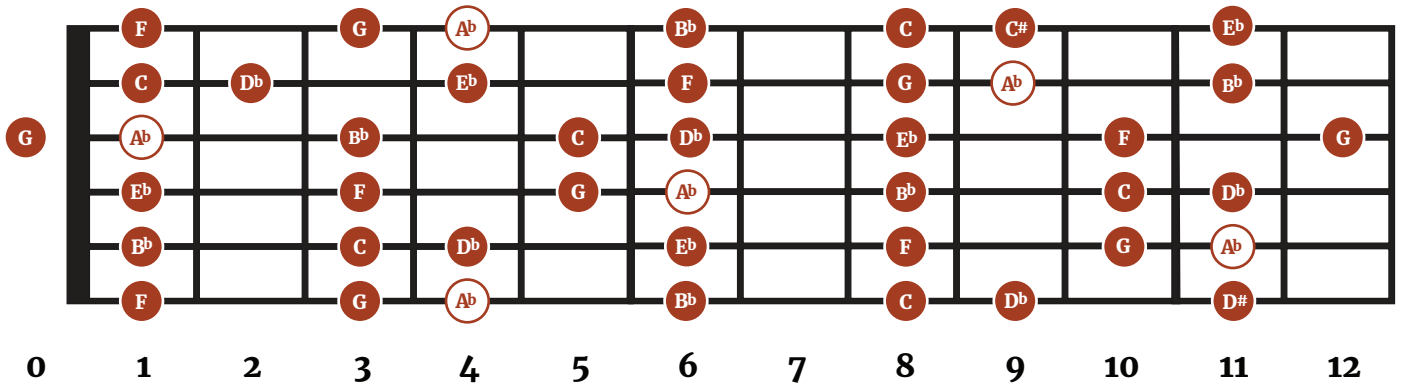
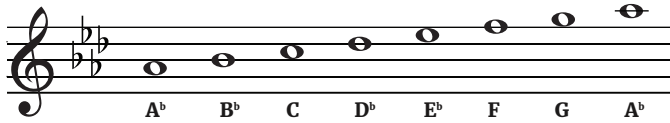


## THE KEY OF **A<sup>b</sup> MAJOR** FOR GUITAR

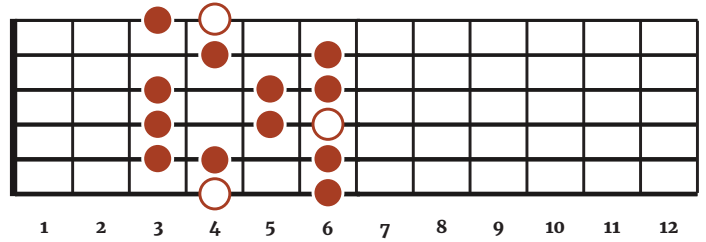
### Notes on the Fretboard



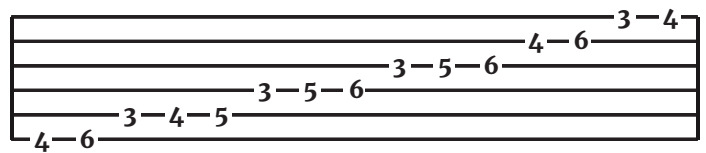
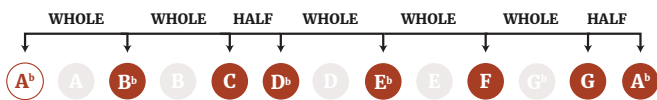
### Notes in the Key of A<sup>b</sup> Major



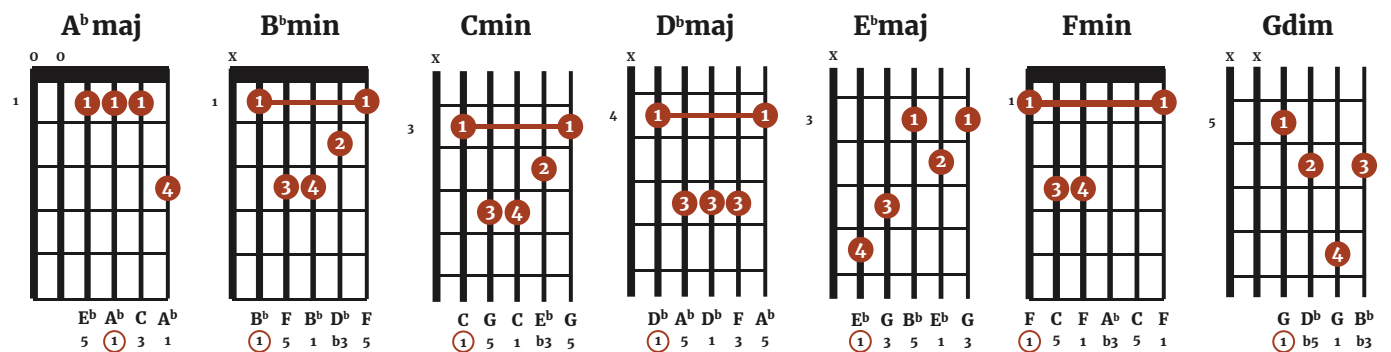
### The A<sup>b</sup> Major Scale



### A<sup>b</sup> Major Scale Step Pattern



### Chords in the Key of A<sup>b</sup> Major



# 7th Chords

## Chord Function

I	ii	iii	IV	V	vi	vii°
Tonic	Supertonic	Mediant	Subdominant	Dominant	Submediant	Subtonic
Abmaj	bbmin	cmin	Dbmaj	Ebmaj	fmin	gdim

## Chord Progressions

I – V – vi – IV	Amaj - Emaj - F#min - Dmaj
I – IV – V	Amaj - Dmaj - Emaj
I – vi – IV – V	Amaj - F#min - Dmaj - Emaj
I – IV – vi – V	Amaj - Dmaj - F#min - Emaj
I – V – vi – iii – IV	Amaj - Emaj - F#min - C#min - Dmaj

## Relative Minor

